

EARTHQUAKE ACTIVITY IN THE YELLOWSTONE REGION

Preliminary Epicenters

October 1 – December 31, 2025

Prepared by the University of Utah Seismograph Stations and funded by
the U.S. Geological Survey (Cooperative Agreement No. G21AC10068)

April 30, 2026

Foreword and Data Explanation

This report contains an epicenter map (Figure 1) and listings of earthquakes (Tables 1 and 2) detected and located in the Yellowstone region (lat. 44° 00' – 45° 10' N, long. 109° 45' – 111° 30' W). The computer program HYPOINVERSE-2000 (F. W. Klein, 2012, U.S. Geological Survey Open-File Report 02-171 revised) was used to process the earthquake data. This report also includes maps and a table of operating seismograph stations in the University of Utah's Yellowstone seismic network (Figure 2, Table 3).

The earthquake listing in Table 2 is estimated to be systematically complete above magnitude 1.5 within Yellowstone. *These data are preliminary—both the locations and magnitudes in this table are subject to revision.*

The following data are listed for each earthquake in Table 2:

- Date (yyymmdd) and origin time in Coordinated Universal Time (UTC). To convert to local time, subtract seven hours for Mountain Standard Time (MST) and six hours for Mountain Daylight Time (MDT). During the report period, local time was MDT through 02:00 (2:00 a.m.) on November 2 and MST thereafter.
- Earthquake location coordinates in degrees and minutes of north latitude and west longitude, and depth in kilometers below sea level. Note that prior to October 1, 2012, the earthquake depths in these quarterly reports were computed relative to a datum of 2000 m above sea level.
- "*" indicates poor depth resolution: no recording stations within 10 km or twice the depth.
- MAG, the computed Richter local magnitude (M_L) for each earthquake. "W" indicates that peak amplitude measurements from Wood-Anderson records were used. Otherwise, the estimate is calculated from signal durations and is more correctly identified as coda magnitude (M_C). The notation "--" indicates that a reliable magnitude estimate could not be made.
- NO, the number of P and S readings used in the solution.
- GAP, the largest azimuthal separation in degrees between recording stations used in the solution.
- DMN, the epicentral distance in kilometers to the closest station.
- RMS, the weighted root-mean-square of the travel-time residuals in seconds:

$$RMS = \left(\frac{\sum_i (W_i R_i)^2}{\sum_i (W_i)^2} \right)^{\frac{1}{2}}$$

where: R_i is the observed minus the computed arrival time for the i -th P or S reading, and W_i is the relative weight given to the i -th P or S arrival time (0.0 for no weight through 1.0 for full weight).

EARTHQUAKE ACTIVITY IN THE YELLOWSTONE REGION
October 1 – December 31, 2025

by J. Farrell, R. Burlacu, P. M. Roberson, and J. M. Hale
with contributions by
K. D. Koper, and K. L. Pankow

University of Utah Seismograph Stations
115 South 1460 East, Room 107 FASB
Salt Lake City, UT 84112-0102
Tele: (801) 581-6274
email: jamie.farrell@utah.edu
URL: <https://quake.utah.edu>

During the three-month period October 1 through December 31, 2025, the University of Utah Seismograph Stations (UUSS) located 508 earthquakes within the Yellowstone region (Figure 1). The total includes 3 earthquakes in the magnitude 3 range and 24 earthquakes in the magnitude 2 range. The largest event to occur during this period was a magnitude 3.7 earthquake on October 28. Two earthquakes were reported felt in the region during the report period (see Table 1, a cumulative tabulation of earthquakes that were felt in the Yellowstone region during 2025). Additional information on earthquakes within the Yellowstone region is available from the University of Utah Seismograph Stations.

Online Information

A complete copy of this report, including maps and the earthquake catalog, is available on the UUSS web site at <https://quake.utah.edu/earthquake-center/quarterly-seismicity-reports>.

For earthquakes of magnitude 3 and larger in the Yellowstone region, the U. S. Geological Survey automatically posts a Community Internet Intensity Map (CIIM) on its "Did You Feel It?" web page at <http://earthquake.usgs.gov/earthquakes/dyfi/>. We encourage anyone who feels an earthquake to report their observations on this interactive web site; felt information is available by zip code on the CIIM site or can be obtained from UUSS directly.

Earthquakes of Magnitude 3.0 or Larger

M _L 3.7	October 28	07:22 MDT	8.7 mi NW of Norris Geyser Basin, YNP
M _L 3.1	November 8	08:04 MST	8.6 mi NW of Norris Geyser Basin, YNP
M _L 3.2	November 9	17:00 MST	8.6 mi NW of Norris Geyser Basin, YNP

Notable Swarm Seismicity

During the report period, there were seven earthquake swarms in the Yellowstone region. For reporting purposes, we use the Mogi definition [Mogi, 1963] of a swarm and require each swarm to have ten or more earthquakes. Note that typically, around 50% of Yellowstone earthquakes occur as part of a seismic swarm [Farrell et al., 2009].

- A. A swarm of 23 earthquakes ($0.7 \leq M \leq 1.9$) occurred about 4.5 mi W of Grant Village, YNP on October 15th.
- B. A swarm of 52 earthquakes ($0.3 \leq M \leq 3.7$) occurred about 8.1 mi NW of Norris Geyser Basin, YNP from October 28th – November 5th.
- C. A swarm of 12 earthquakes ($0.2 \leq M \leq 2.0$) occurred about 5.6 mi N of West Yellowstone, MT from October 28th – 30th.
- D. A swarm of 10 earthquakes ($0.1 \leq M \leq 1.5$) occurred about 8.4 mi W of Norris Geyser Basin, YNP from October 29th – November 1st.
- E. A swarm of 110 earthquakes ($-0.4 \leq M \leq 2.5$) occurred about 4.3 mi S of Norris Geyser Basin, YNP from November 5th – December 1st.
- F. A swarm of 29 earthquakes ($0.4 \leq M \leq 3.2$) occurred about 8.3 mi NW of Norris Geyser Basin, YNP from November 8th – December 1st.
- G. A swarm of 43 earthquakes ($0.0 \leq M \leq 2.0$) occurred about 9.2 mi NW of Norris Geyser Basin, YNP from November 18th – December 1st.

These swarms are labeled in Figure 1.

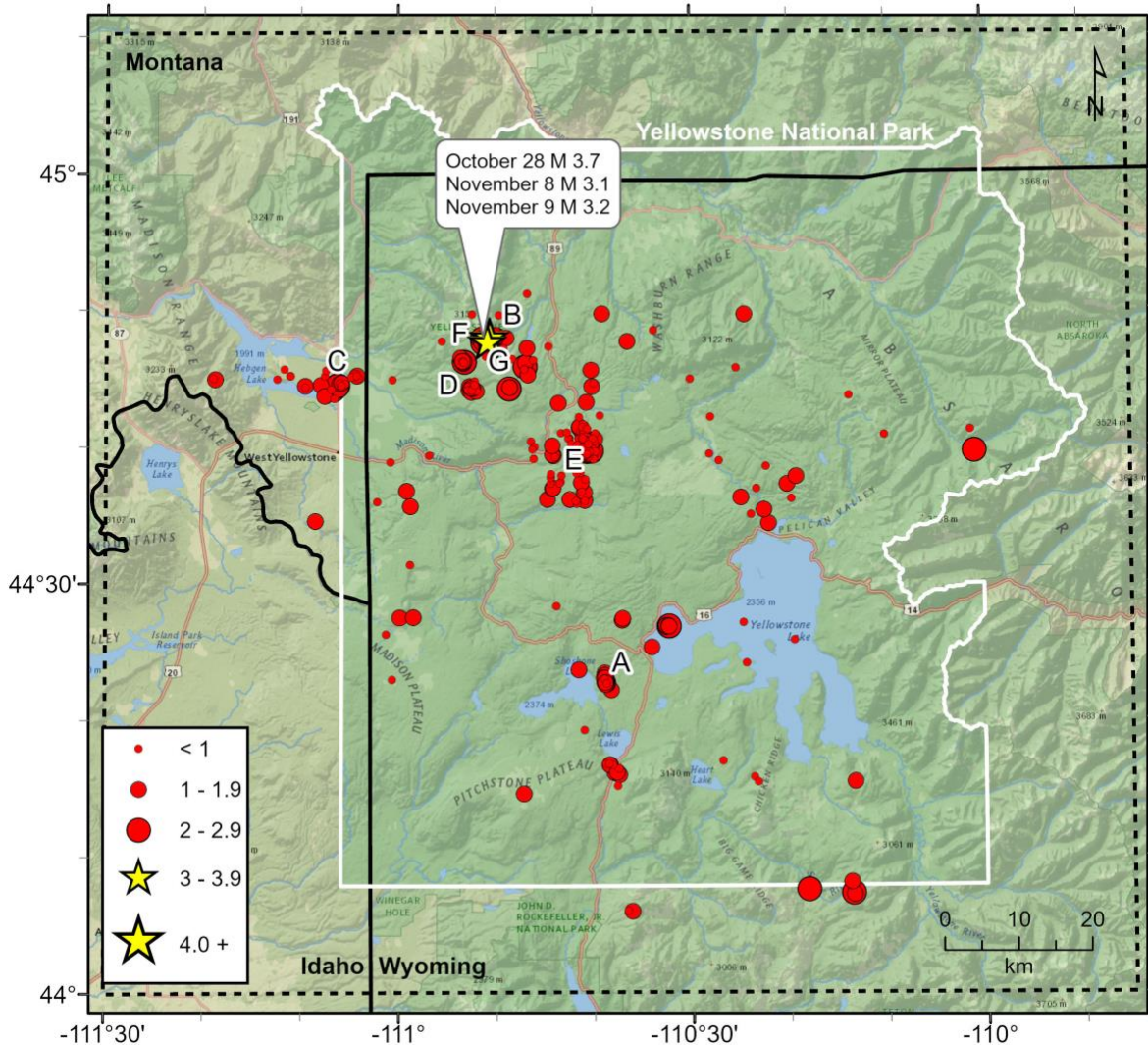


Figure 1. Epicenters of earthquakes located by the University of Utah Seismograph Stations, October 1, 2025, through December 31, 2025. Earthquake swarms (labeled A–G) are discussed in the text.

Table 1
EARTHQUAKES FELT IN THE YELLOWSTONE REGION
January 1, 2025, to December 31, 2025

Date	Time†	Felt Information‡	Latitude	Longitude	Magnitude§
January 29 January 28	00:59 UTC 17:59 MST	Yellowstone. Felt (V) at Yellowstone National Park, WY.	44° 45.94'	110° 46.26'	M _L 3.7
June 4	20:50 UTC 14:50 MDT	Yellowstone. Felt (III) at West Yellowstone, MT.	44° 46.74'	111° 08.63'	M _w 2.7
August 19	11:14 MDT 17:14 UTC	Yellowstone. Felt (III) at Yellowstone National Park, WY.	44° 46.83'	110° 43.31'	M _L 3.7
September 28	01:29 MDT 07:29 UTC	Yellowstone. Felt (II) at Yellowstone National Park, WY.	44° 47.78'	110° 45.94'	M _L 3.4
September 28	01:38 MDT 07:38 UTC	Yellowstone. Felt (III) at Yellowstone National Park, WY.	44° 47.25'	110° 45.94'	M _L 3.5
October 28	07:22 MDT 13:22 UTC	Yellowstone. Felt (III) at Yellowstone National Park.	44° 48.12'	110° 50.60'	M _L 3.7
November 08	08:04 MST 15:04 UTC	Yellowstone. Felt (III) at Yellowstone National Park.	44° 47.81'	110° 50.88'	M _L 3.1

† Times are listed both as Local Time—Mountain Standard Time (MST) or Mountain Daylight Time (MDT)—and as Coordinated Universal Time (UTC).

? Indicates on-line reports that appear questionable given the distance from the source

‡ *CIIM* indicates the availability of a Community Internet Intensity Map

(<http://earthquake.usgs.gov/earthquakes/dyfi>), compiled by the U.S. Geological Survey (USGS); *ShakeMap* indicates the availability of computer-generated maps of ground-shaking (<https://quake.utah.edu>), produced by the University of Utah Seismograph Stations (UUSS). Roman numerals correspond to the Modified Mercalli intensity scale. Unless otherwise indicated, felt information is from the USGS (1) CIIM reports and/or (2) PDE Monthly (or) Weekly Listing Files (<http://earthquake.usgs.gov/data/pde.php>).

§ Richter local magnitude (M_L) or coda magnitude (M_C) determined by UUSS. If labeled “NEIC,” data are from the National Earthquake Information Center of the USGS.

Yellowstone Seismic Network December 31, 2025

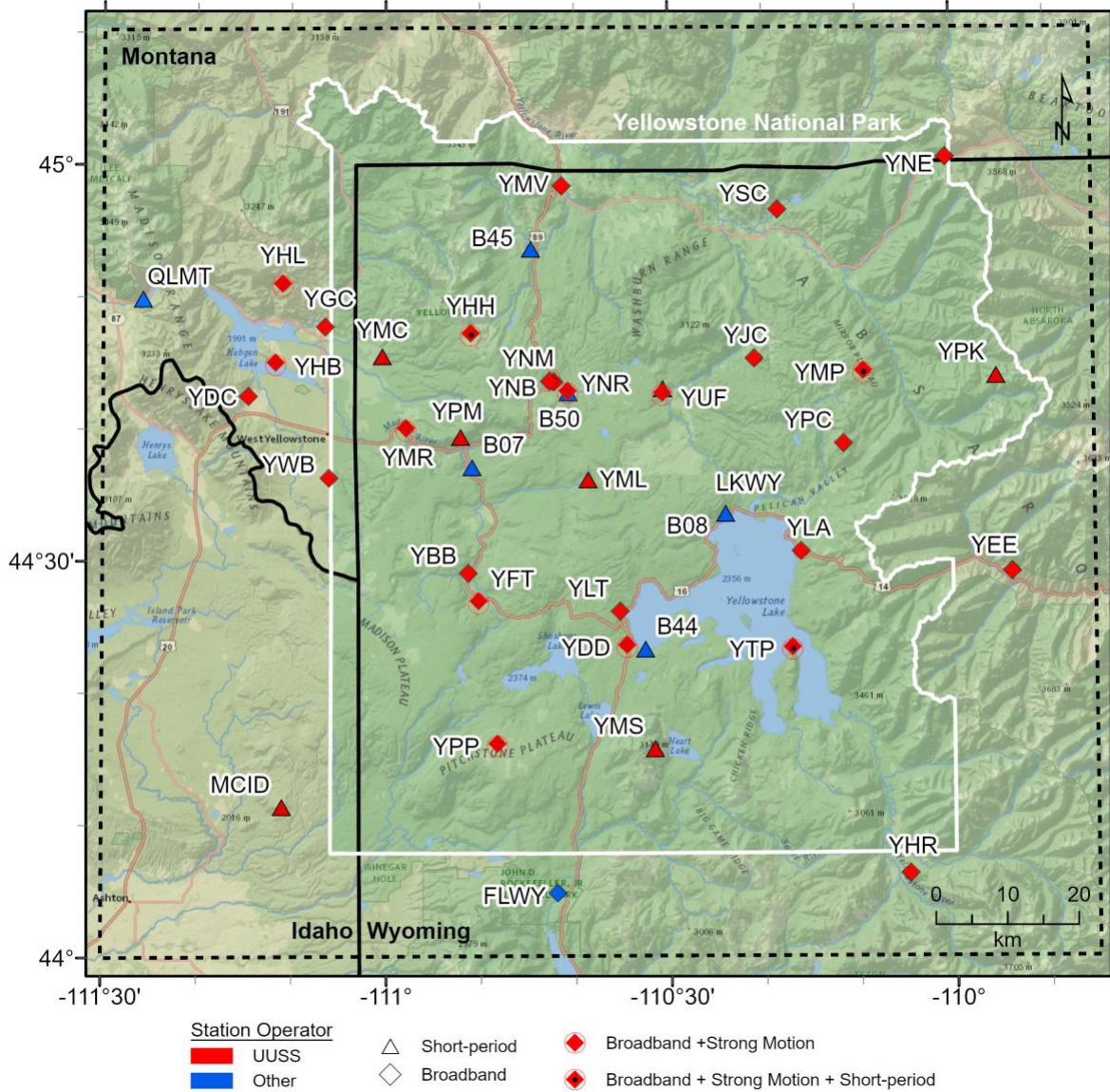


Figure 2. Seismograph stations of the Yellowstone Seismic Network as of December 31, 2025.

Table 2. Earthquakes in the Yellowstone Region: October 1–December 31, 2025

DATE	ORIGIN TIME	LATITUDE	LONGITUDE	DEPTH	MAG	NO	GAP	DMN	RMS
251001	12:26:15.48	44°47.92'	110°50.89'	4.9	1.7W	26	109	1	0.20
251001	12:42:08.16	44°47.75'	110°50.74'	4.8	1.6W	21	108	1	0.11
251001	21:16:28.71	44°40.19'	110°41.15'	5.4	0.3	11	177	5	0.15
251001	21:16:32.53	44°44.73'	110°40.01'	5.3	0.3	6	192	3	0.28
251001	21:58:05.60	44°47.90'	110°51.65'	4.1	1.4W	12	111	1	0.14
251002	14:52:40.87	44°37.69'	110°40.84'	7.9	0.5W	20	99	9	0.16
251003	04:31:38.43	44°48.05'	110°51.28'	4.8	0.5	16	111	1	0.18
251004	04:52:38.31	44°47.82'	110°51.61'	4.4	0.3	20	110	1	0.16
251005	09:26:59.71	44°47.29'	110°46.80'	2.7	1.3W	21	102	6	0.16
251005	09:41:49.17	44°47.82'	110°51.07'	5.1	1.7W	27	110	1	0.14
251005	09:52:36.14	44°47.84'	110°51.09'	4.0	0.6	12	110	1	0.12
251005	09:59:54.25	44°47.89'	110°51.14'	3.2	0.1	17	110	1	0.15
251006	13:23:19.43	44°40.33'	110°40.98'	5.4	0.9W	16	90	5	0.15
251006	14:59:27.15	44°40.26'	110°41.40'	6.4	0.4	10	94	5	0.17
251006	14:59:47.92	44°41.39'	110°40.66'	7.7	-0.3	8	94	3	0.08
251006	15:00:15.64	44°40.15'	110°40.73'	4.4	0.4	12	90	5	0.21
251006	15:00:27.96	44°41.20'	110°41.36'	6.3	0.5	11	162	3	0.13
251007	01:10:02.41	44°48.12'	110°51.18'	4.6	0.4	18	112	2	0.14
251007	13:38:47.71	44°48.01'	110°50.89'	5.0	1.4W	22	110	1	0.19
251007	16:12:11.38	44°47.80'	110°51.24'	5.0	0.6	31	109	1	0.19
251007	18:39:07.44	44°49.73'	110°24.50'	10.5	1.2W	19	106	9	0.21
251007	19:39:04.65	44°44.27'	111°06.90'	9.3	0.4	18	97	7	0.16
251008	02:55:53.36	44°47.99'	110°50.85'	4.7	0.9W	23	109	1	0.13
251008	03:19:17.17	44°39.97'	110°41.13'	5.5	--	10	96	6	0.22
251008	03:19:18.33	44°40.38'	110°41.03'	6.4	1.0	10	90	5	0.20
251008	13:30:57.99	44°47.79'	110°55.56'	5.6	0.3	16	171	6	0.19
251008	15:05:04.53	44°49.78'	110°39.11'	7.4	1.2W	20	75	10	0.16
251008	20:36:48.22	44°47.43'	110°50.58'	4.8	1.7W	27	105	1	0.18
251009	04:05:21.72	44°47.69'	110°51.33'	4.9	2.1W	40	109	1	0.17
251009	04:06:47.14	44°47.98'	110°51.39'	7.7	2.7W	41	79	1	0.18
251010	13:54:18.45	44°43.83'	111°07.53'	12.9	1.6W	30	71	6	0.15
251010	14:01:51.17	44°43.78'	111°07.58'	13.1	1.1W	22	72	6	0.17
251010	23:40:33.39	44°39.89'	110°40.59'	5.3	1.1	17	91	5	0.12
251011	04:35:28.97	44°39.62'	110°40.73'	4.9	0.2	13	97	6	0.09
251011	20:17:02.22	44°47.77'	110°36.53'	4.0*	1.9W	24	72	11	0.12
251011	21:25:27.32	44°39.05'	110°27.17'	2.5	0.3	8	135	8	0.07
251012	13:22:17.24	44°27.52'	110°37.08'	3.0	1.2W	11	79	3	0.08
251012	13:23:14.08	44°27.39'	110°37.14'	3.0	1.3W	14	63	3	0.08
251012	18:28:21.19	44°27.59'	110°59.88'	5.0*	1.8W	24	72	12	0.24
251014	05:59:13.47	44°36.26'	110°19.78'	5.2	0.3	8	89	7	0.06
251014	10:33:56.32	44°47.72'	110°51.48'	4.9	1.2W	26	109	1	0.14
251014	11:22:33.83	44°47.89'	110°51.48'	4.2	0.6	19	111	1	0.16
251014	17:30:15.23	44°47.94'	110°50.22'	4.5	--	12	111	2	0.17
251015	08:57:11.53	44°48.20'	110°50.04'	4.8	1.4W	28	110	2	0.17
251015	09:37:27.54	44°23.25'	110°38.80'	2.0	1.8W	12	104	6	0.14

Table 2. Earthquakes in the Yellowstone Region: October 1–December 31, 2025

DATE	ORIGIN TIME	LATITUDE	LONGITUDE	DEPTH	MAG	NO	GAP	DMN	RMS
251015	09:48:11.06	44°22.98'	110°38.82'	4.0	1.4W	15	76	6	0.09
251015	09:48:24.87	44°23.10'	110°38.90'	4.1	1.6	11	102	6	0.05
251015	09:52:09.02	44°22.96'	110°38.88'	4.1	1.3W	16	83	6	0.09
251015	09:53:28.94	44°23.17'	110°38.91'	2.0	1.0W	11	104	6	0.20
251015	09:58:22.85	44°22.85'	110°38.97'	2.3	1.4W	14	83	6	0.24
251015	10:00:40.99	44°22.90'	110°38.65'	3.8	1.9W	25	57	6	0.10
251015	10:02:26.68	44°23.17'	110°39.04'	4.1	1.0W	11	136	6	0.05
251015	10:08:08.14	44°22.76'	110°38.64'	4.1	1.4	12	101	6	0.06
251015	10:08:57.43	44°22.71'	110°38.79'	2.0	1.2	12	102	6	0.11
251015	10:09:48.73	44°22.84'	110°38.87'	3.1	0.9W	10	105	6	0.10
251015	10:10:06.84	44°22.97'	110°38.86'	4.0	1.5W	15	71	6	0.07
251015	10:10:31.02	44°22.80'	110°38.77'	4.1	1.3	13	98	6	0.04
251015	10:10:41.57	44°22.73'	110°38.77'	4.3	1.5	11	96	6	0.05
251015	10:11:33.18	44°23.36'	110°38.94'	3.2	1.3W	11	79	6	0.08
251015	10:13:05.43	44°22.79'	110°38.67'	4.1	1.7W	21	57	6	0.07
251015	10:15:09.75	44°22.29'	110°38.27'	5.7	1.9W	27	58	6	0.18
251015	10:22:07.18	44°22.77'	110°38.74'	4.5	--	11	97	6	0.08
251015	10:25:23.08	44°23.25'	110°38.95'	4.3	1.3W	19	65	6	0.07
251015	10:27:24.09	44°22.82'	110°38.75'	4.0	1.4W	15	101	6	0.06
251015	10:51:20.54	44°23.53'	110°38.94'	-0.9	1.3W	12	67	6	0.12
251015	10:57:04.54	44°22.69'	110°38.85'	1.6	1.1W	12	102	6	0.11
251015	12:54:16.94	44°23.10'	110°38.95'	2.0	0.7W	10	139	6	0.09
251015	16:39:29.38	44°40.33'	110°40.82'	7.5	1.1W	22	89	5	0.16
251015	16:45:05.07	44°40.20'	110°40.99'	7.0	0.9W	18	91	5	0.19
251016	06:24:57.86	44°44.49'	110°40.17'	5.1	1.3W	12	155	3	0.20
251016	06:28:14.97	44°45.67'	110°40.24'	2.1	1.1W	12	190	5	0.10
251017	03:59:21.78	44°39.99'	110°40.55'	5.1	0.6	10	91	5	0.15
251017	03:59:32.99	44°39.50'	110°40.76'	0.9	0.6	9	99	6	0.08
251017	18:05:06.60	44°47.81'	110°51.28'	4.7	0.9W	21	109	1	0.16
251018	04:13:14.70	44°45.27'	111°04.25'	10.9	1.0W	15	108	5	0.11
251018	07:06:27.84	44°45.10'	111°04.11'	10.8	0.8W	18	107	5	0.11
251018	07:17:08.88	44°39.59'	110°40.84'	2.1	0.3	11	99	6	0.12
251018	07:17:14.74	44°41.21'	110°41.09'	6.2	0.7	10	81	3	0.08
251018	07:55:08.57	44°45.44'	111°04.39'	10.9	0.8W	19	109	5	0.10
251018	08:14:05.04	44°45.29'	111°04.31'	11.0	0.6W	16	107	5	0.12
251018	09:11:57.95	44°39.63'	110°40.46'	4.9	0.5	14	95	6	0.08
251018	23:50:12.47	44°40.09'	110°40.91'	5.7	1.0W	17	92	5	0.09
251019	10:01:03.65	44°46.50'	110°48.34'	4.5	0.3	8	190	4	0.09
251019	16:20:36.42	44°40.28'	110°41.04'	5.8	1.3W	15	176	5	0.09
251020	13:33:05.13	44°34.45'	110°22.12'	3.6	1.4W	17	71	3	0.08
251020	16:20:58.94	44°39.19'	110°46.15'	7.8	0.6W	14	122	7	0.13
251020	17:00:04.77	44°39.90'	110°46.27'	3.6	0.4	9	108	8	0.13
251020	18:15:20.28	44°40.07'	110°46.07'	4.2	0.4	7	105	8	0.11
251021	00:27:50.53	44°39.54'	110°28.14'	2.4	-0.1	8	138	7	0.11
251022	23:43:00.19	44°39.68'	110°00.97'	10.9	2.1W	19	111	11	0.22

Table 2. Earthquakes in the Yellowstone Region: October 1–December 31, 2025

DATE	ORIGIN TIME	LATITUDE	LONGITUDE	DEPTH	MAG	NO	GAP	DMN	RMS
251023	04:51:21.26	44°39.69'	110°40.68'	5.6	0.2	9	95	6	0.11
251023	04:51:55.03	44°40.30'	110°40.93'	5.6	0.2	16	90	5	0.18
251023	04:53:59.44	44°39.78'	110°40.54'	6.2	1.2W	17	90	6	0.16
251024	08:13:11.96	44°39.70'	110°41.43'	3.2	0.2	12	141	6	0.17
251025	01:50:57.95	44°44.25'	111°06.68'	9.1	2.0W	36	68	7	0.15
251025	02:12:06.29	44°27.21'	110°24.74'	2.9*	0.1	10	120	12	0.08
251025	02:49:37.84	44°39.68'	110°40.68'	5.3	1.1W	24	53	6	0.17
251025	10:09:29.45	44°26.96'	110°32.33'	2.0	2.0W	23	77	4	0.13
251025	10:12:13.94	44°26.97'	110°32.42'	1.9	1.4W	16	76	4	0.10
251025	10:17:28.60	44°27.00'	110°32.63'	3.1	1.4W	22	74	4	0.11
251025	10:20:07.55	44°26.94'	110°32.35'	2.5	1.3W	15	77	4	0.11
251025	10:28:59.96	44°26.98'	110°32.46'	2.4	1.6	13	75	4	0.11
251025	10:29:03.32	44°25.42'	110°34.11'	1.7	1.5W	7	198	2	0.11
251025	10:35:47.92	44°26.92'	110°32.66'	3.3	1.6W	27	73	4	0.10
251025	11:09:54.14	44°44.32'	110°48.64'	8.0	2.3W	35	45	6	0.16
251025	11:26:11.63	44°37.88'	110°19.28'	3.7	1.1W	12	88	10	0.15
251025	18:49:59.79	44°35.11'	110°23.93'	3.9	0.5	6	159	2	0.05
251025	19:04:06.23	44°36.35'	110°24.94'	3.2	1.3W	11	107	5	0.09
251025	19:25:17.66	44°37.32'	110°20.20'	2.6	1.5W	7	270	8	0.11
251025	23:43:25.89	44°40.30'	110°40.79'	5.9	1.4W	23	89	5	0.18
251026	01:06:27.13	44°44.42'	110°48.59'	4.8	0.9	16	81	6	0.12
251026	01:51:03.50	44°40.15'	110°40.84'	6.0	1.1W	18	88	5	0.15
251026	21:54:27.26	44°34.63'	111°08.52'	8.3	1.3W	21	137	5	0.15
251028	10:16:01.12	44°44.98'	111°18.80'	10.8	1.0W	23	145	7	0.19
251028	10:17:57.63	44°45.04'	111°18.99'	9.3	0.4	17	145	8	0.12
251028	12:59:53.38	44°47.86'	110°50.79'	4.9	1.8W	37	109	1	0.15
251028	13:00:43.73	44°47.94'	110°50.73'	7.1	2.7W	38	109	1	0.17
251028	13:12:18.88	44°47.78'	110°50.86'	4.7	1.5W	29	109	1	0.15
251028	13:22:28.52	44°48.12'	110°50.72'	7.2	3.7W	44	110	2	0.19
251028	13:34:34.39	44°47.99'	110°51.18'	4.4	0.7	16	110	1	0.18
251028	14:20:30.57	44°48.04'	110°50.50'	3.8	0.5	12	235	2	0.15
251028	14:27:29.50	44°47.81'	110°50.84'	5.0	2.2W	33	109	1	0.15
251028	15:07:01.62	44°48.54'	110°50.83'	4.7	0.7	15	206	2	0.18
251028	15:11:06.78	44°47.69'	110°50.77'	5.2	2.5W	39	107	1	0.16
251028	17:50:41.24	44°47.74'	110°51.12'	4.8	1.4W	34	109	1	0.17
251028	20:12:41.24	44°44.54'	111°05.84'	10.1	0.2	19	81	6	0.17
251028	20:14:03.29	44°44.46'	111°05.90'	10.4	0.2	19	79	6	0.15
251028	20:37:47.23	44°44.67'	111°05.46'	9.2	0.4	18	87	6	0.17
251028	21:41:12.41	44°44.53'	111°05.83'	11.6	0.9W	22	66	6	0.14
251028	21:56:30.95	44°44.70'	111°06.05'	10.5	1.0W	26	64	6	0.15
251028	23:00:49.28	44°45.73'	111°11.70'	9.1	-0.5	6	153	1	0.07
251028	23:01:16.48	44°44.75'	111°05.83'	10.4	1.0W	18	83	6	0.17
251029	00:50:44.99	44°47.76'	110°50.91'	4.0	1.6W	27	108	1	0.17
251029	03:40:08.30	44°45.24'	111°11.06'	10.0	0.6	22	66	1	0.18
251029	04:45:15.52	44°44.57'	111°06.23'	11.9	2.0W	37	66	6	0.13

Table 2. Earthquakes in the Yellowstone Region: October 1–December 31, 2025

DATE	ORIGIN TIME	LATITUDE	LONGITUDE	DEPTH	MAG	NO	GAP	DMN	RMS
251029	04:46:44.46	44°47.68'	110°50.75'	3.3	0.6	12	125	1	0.11
251029	04:46:52.49	44°43.59'	111°06.58'	8.1	0.6	12	84	7	0.11
251029	04:49:05.78	44°47.78'	110°50.68'	4.5	0.5	13	231	1	0.14
251029	04:51:08.60	44°47.52'	110°50.35'	4.1	0.6	13	228	1	0.15
251029	07:25:05.49	44°44.53'	111°06.28'	11.7	2.0W	37	66	6	0.14
251029	07:28:04.93	44°45.17'	111°04.85'	9.2	0.8W	13	139	13	0.15
251029	08:06:15.27	44°47.75'	110°50.63'	4.7	0.5	27	108	1	0.15
251029	08:37:39.42	44°47.58'	110°50.38'	4.4	0.4	12	229	1	0.15
251029	08:42:43.96	44°47.65'	110°51.03'	4.8	2.3W	37	108	1	0.14
251029	10:45:25.93	44°47.53'	110°50.70'	4.6	0.9W	32	107	1	0.17
251029	10:49:13.51	44°47.73'	110°50.92'	4.7	0.2	15	108	1	0.13
251029	12:08:13.66	44°47.79'	110°50.97'	4.8	1.4W	25	108	1	0.15
251029	12:44:36.57	44°47.92'	110°50.94'	4.9	1.6W	27	109	1	0.15
251029	13:02:37.78	44°47.72'	110°50.75'	4.5	1.1W	28	107	1	0.14
251029	16:08:22.67	44°47.52'	110°50.54'	4.8	1.4W	33	106	1	0.17
251029	18:39:36.89	44°44.41'	110°52.29'	8.7	0.9	19	80	6	0.17
251029	18:39:43.21	44°44.25'	110°52.58'	7.9	0.6	16	81	6	0.16
251029	18:40:41.20	44°44.07'	110°52.53'	9.8	1.5W	31	79	6	0.21
251029	19:13:59.32	44°44.63'	111°05.78'	10.7	0.9W	23	77	6	0.17
251029	21:42:22.98	44°47.58'	110°50.77'	5.0	1.8W	36	107	1	0.19
251030	00:03:35.34	44°47.56'	110°50.70'	4.7	1.3W	28	107	1	0.18
251030	00:19:13.96	44°47.78'	110°51.00'	4.9	2.1W	41	108	1	0.17
251030	05:44:25.86	44°47.97'	110°50.04'	4.9	1.4W	35	108	2	0.17
251030	07:33:03.69	44°24.26'	110°24.44'	4.7	0.9W	16	148	10	0.12
251030	09:16:06.36	44°44.73'	111°06.00'	11.6	0.8W	20	81	6	0.11
251030	15:29:53.55	44°47.76'	110°50.97'	4.8	1.4W	38	108	1	0.18
251030	19:58:22.93	44°48.31'	110°50.71'	4.9	0.9W	25	117	2	0.16
251030	20:48:19.42	44°48.14'	110°50.82'	4.1	0.6	10	235	2	0.14
251030	21:47:02.83	44°44.22'	110°52.47'	6.5	0.1	10	94	6	0.07
251030	23:08:38.45	44°46.92'	110°50.43'	4.8*	0.3	9	206	13	0.08
251030	23:35:39.88	44°47.86'	110°51.06'	5.0	1.5W	33	110	1	0.15
251031	04:19:49.51	44°44.39'	110°52.31'	9.4	0.7W	22	80	6	0.11
251031	05:20:47.64	44°47.65'	110°50.75'	4.8	1.9W	38	78	1	0.15
251031	05:22:57.24	44°47.61'	110°50.63'	4.8	1.1W	25	107	1	0.14
251031	05:47:31.10	44°47.67'	110°50.90'	5.4	1.1W	29	108	1	0.14
251031	06:30:11.64	44°48.29'	110°50.32'	4.8	0.5	9	238	2	0.08
251031	06:46:36.41	44°47.60'	110°50.69'	5.2	1.7W	34	107	1	0.15
251031	07:03:49.36	44°47.62'	110°50.65'	4.9	1.3W	34	107	1	0.15
251031	10:50:36.00	44°47.59'	110°50.63'	4.8	1.2W	32	107	1	0.14
251031	12:03:56.68	44°47.70'	110°50.90'	5.0	0.3	15	108	1	0.10
251031	18:51:46.08	44°47.76'	110°51.15'	4.8	1.5W	29	109	1	0.15
251031	20:09:38.87	44°37.41'	110°43.49'	5.5	0.5	11	88	7	0.10
251031	21:07:53.62	44°47.68'	110°50.85'	4.3	0.9W	18	108	1	0.13
251031	22:13:03.23	44°37.97'	110°43.30'	7.3	0.2	11	109	7	0.13
251031	22:19:35.12	44°37.52'	110°43.38'	6.5	0.6	18	62	7	0.15

Table 2. Earthquakes in the Yellowstone Region: October 1–December 31, 2025

DATE	ORIGIN TIME	LATITUDE	LONGITUDE	DEPTH	MAG	NO	GAP	DMN	RMS
251101	02:33:37.32	44°44.37'	110°52.37'	8.5	1.2W	22	80	6	0.13
251101	09:01:15.51	44°47.86'	110°51.06'	4.8	0.7	19	110	1	0.21
251101	15:25:32.59	44°44.54'	110°52.85'	9.6	0.9W	18	88	6	0.15
251101	18:00:39.90	44°48.12'	110°50.16'	4.9	1.0	9	236	2	0.09
251101	19:49:30.52	44°44.39'	110°52.57'	8.6	1.1	20	82	6	0.16
251101	19:49:35.23	44°44.15'	110°52.00'	8.0	1.4W	15	75	6	0.16
251101	20:03:16.65	44°44.17'	110°52.45'	11.3	1.5W	25	79	6	0.13
251102	00:17:47.03	44°47.55'	110°50.28'	4.5	0.9	13	229	1	0.16
251102	09:06:45.88	44°47.77'	110°50.65'	3.9	0.6	10	231	1	0.13
251102	09:50:28.13	44°48.19'	110°49.70'	4.1	0.8	14	220	2	0.15
251102	23:22:02.77	44°41.08'	110°43.34'	6.8	0.6	8	186	5	0.07
251102	23:28:30.15	44°47.42'	110°44.62'	5.8	0.5	12	214	8	0.08
251102	23:28:50.92	44°43.27'	110°43.60'	7.9	1.2	11	151	2	0.07
251103	00:35:57.76	44°39.53'	110°40.66'	4.8	0.2	8	156	6	0.06
251103	06:23:18.67	44°25.92'	110°19.52'	9.5	0.6	11	118	5	0.09
251103	11:24:35.17	44°47.27'	110°49.20'	4.2	0.9W	16	114	2	0.10
251104	07:08:32.92	44°47.76'	110°50.32'	4.7	1.5W	29	107	1	0.17
251104	17:17:06.95	44°47.94'	110°50.91'	4.9	0.9W	29	77	1	0.18
251105	00:11:02.97	44°47.68'	110°50.80'	4.9	0.9	25	108	1	0.18
251105	04:02:57.42	44°38.16'	110°41.76'	2.7	0.3	15	133	5	0.15
251105	06:58:15.49	44°47.55'	110°50.58'	4.9	1.2W	26	107	1	0.12
251105	07:59:27.02	44°44.44'	110°52.08'	8.9	0.4	12	93	5	0.09
251105	11:17:46.78	44°19.37'	110°41.02'	2.0*	0.8	17	70	11	0.20
251106	02:25:29.46	44°39.73'	110°40.66'	7.2	2.5W	36	47	6	0.17
251106	18:58:27.16	44°51.27'	110°46.78'	6.3	0.9	7	273	9	0.12
251106	19:12:44.54	44°40.25'	110°40.84'	6.2	1.7W	23	50	5	0.18
251106	19:13:01.59	44°41.53'	110°41.44'	5.9	1.1	13	158	2	0.14
251106	19:13:15.94	44°40.72'	110°41.07'	5.7	1.9W	20	86	4	0.14
251106	19:14:34.00	44°39.83'	110°40.82'	6.9	2.0W	34	49	5	0.19
251106	23:45:45.62	44°44.24'	110°52.88'	4.1	0.3	8	99	6	0.08
251107	02:52:07.40	44°40.51'	110°40.86'	5.7	0.6	16	87	4	0.16
251107	08:26:20.37	44°26.36'	111°01.30'	3.4*	0.7	16	156	15	0.19
251107	17:49:23.80	44°41.41'	110°41.09'	6.5	0.3	13	82	3	0.16
251107	17:49:32.13	44°41.53'	110°41.16'	6.6	0.0	13	84	2	0.16
251107	19:53:35.47	44°37.00'	110°23.36'	2.3	0.2	8	182	6	0.18
251107	19:56:33.36	44°40.13'	110°40.72'	6.4	1.1W	22	101	5	0.15
251107	19:57:47.95	44°40.71'	110°42.47'	2.1	0.9	11	116	4	0.07
251107	19:58:30.09	44°40.67'	110°42.46'	2.4	0.6	11	117	5	0.07
251107	19:58:56.79	44°39.92'	110°40.59'	4.8	0.2	15	109	5	0.14
251107	20:01:05.02	44°39.66'	110°41.18'	4.0	0.7	17	100	6	0.15
251108	04:14:49.65	44°40.25'	110°40.87'	5.3	1.2W	23	68	5	0.16
251108	05:05:52.92	44°40.45'	110°40.84'	5.6	0.8	13	111	4	0.12
251108	08:04:13.01	44°40.20'	110°41.69'	3.9	-0.4	14	135	5	0.20
251108	15:04:19.31	44°47.81'	110°50.88'	6.9	3.1W	41	109	1	0.15
251108	16:09:20.55	44°47.87'	110°50.99'	5.0	0.9	28	115	1	0.18

Table 2. Earthquakes in the Yellowstone Region: October 1–December 31, 2025

DATE	ORIGIN TIME	LATITUDE	LONGITUDE	DEPTH	MAG	NO	GAP	DMN	RMS
251109	01:19:37.90	44°47.55'	110°50.75'	4.5	0.9	15	107	1	0.12
251109	02:42:03.59	44°47.64'	110°50.85'	4.6	0.7	15	108	1	0.13
251109	03:45:44.12	44°47.61'	110°50.79'	3.8	0.7	12	137	1	0.08
251109	03:50:43.41	44°47.81'	110°51.03'	3.6	1.1W	18	109	1	0.15
251109	06:02:08.42	44°39.92'	110°40.85'	4.9	0.5	18	94	5	0.16
251109	15:02:58.67	44°47.70'	110°50.17'	4.4	0.5	14	215	1	0.16
251109	17:12:03.39	44°47.68'	110°50.33'	4.6	0.5	11	230	1	0.16
251109	17:19:46.15	44°40.06'	110°40.60'	7.5	1.8W	28	48	5	0.16
251109	17:27:52.78	44°47.61'	110°50.43'	4.5	0.5	11	230	1	0.16
251109	19:09:31.19	44°47.97'	110°50.62'	4.9	0.4	14	109	1	0.12
251109	21:17:24.18	44°47.75'	110°50.39'	4.1	0.6	12	232	1	0.13
251110	00:00:57.89	44°48.17'	110°50.60'	7.6	3.2W	46	110	2	0.19
251110	00:56:23.15	44°46.69'	110°51.03'	3.7	0.5	12	178	1	0.20
251110	01:05:08.44	44°47.96'	110°50.50'	4.3	0.7W	19	108	1	0.14
251110	02:53:44.06	44°39.88'	110°40.59'	5.0	0.3	15	91	6	0.14
251110	03:21:37.03	44°47.99'	110°50.75'	4.5	0.7W	17	109	1	0.16
251110	03:21:43.80	44°47.52'	110°51.00'	4.7	1.1W	11	107	0	0.07
251110	04:07:10.94	44°47.62'	110°50.61'	4.1	0.5	15	229	1	0.15
251110	07:10:15.82	44°48.58'	110°33.85'	2.0*	0.3	16	81	12	0.13
251110	07:38:38.69	44°40.94'	110°41.01'	6.4	0.4	10	166	4	0.27
251110	15:05:56.34	44°39.95'	110°40.52'	7.2	0.3	11	91	5	0.14
251110	16:08:25.34	44°38.17'	110°41.39'	4.9	0.4	11	130	5	0.11
251110	16:57:18.39	44°47.65'	110°50.85'	4.9	1.2W	30	108	1	0.19
251110	17:24:43.50	44°47.72'	110°50.99'	4.8	1.4W	28	108	1	0.18
251110	17:31:47.37	44°48.05'	110°50.77'	4.7	0.6	22	110	1	0.18
251110	17:51:31.30	44°39.87'	110°40.75'	5.3	1.6W	26	68	5	0.14
251110	19:02:19.08	44°47.34'	110°50.28'	4.5	1.3W	26	104	1	0.14
251110	19:36:16.58	44°47.69'	110°50.98'	4.9	1.5W	31	108	1	0.15
251110	22:53:58.28	44°48.57'	110°49.95'	4.7	0.6	15	210	3	0.18
251111	01:50:23.99	44°40.64'	110°39.87'	7.3	1.1W	25	85	4	0.15
251111	05:04:06.86	44°39.95'	110°40.76'	4.8	0.5	16	93	5	0.16
251111	05:34:52.32	44°27.61'	110°58.49'	4.8*	1.0W	17	146	11	0.14
251111	13:47:59.77	44°48.20'	110°50.45'	4.9	0.4	8	237	2	0.08
251111	14:01:44.66	44°39.53'	110°40.63'	4.9	0.9W	17	90	6	0.10
251111	18:26:36.96	44°47.71'	110°50.80'	5.0	2.1W	31	131	1	0.16
251112	04:13:08.86	44°47.63'	110°50.22'	4.8	0.5	11	229	1	0.15
251112	05:26:00.16	44°47.65'	110°50.75'	5.0	2.0W	33	120	1	0.14
251112	10:51:18.11	44°41.11'	110°42.74'	2.1	0.0	8	195	4	0.08
251112	13:30:45.77	44°47.81'	110°50.36'	4.4	0.3	10	232	1	0.11
251112	13:39:31.47	44°36.85'	110°59.17'	11.6	1.5W	27	66	6	0.13
251112	15:30:53.77	44°16.80'	110°38.40'	4.7	1.1	18	92	9	0.12
251112	15:33:20.96	44°16.81'	110°38.45'	4.8	1.0	14	107	9	0.12
251112	15:33:39.25	44°16.89'	110°38.84'	4.1	0.9	13	110	10	0.12
251112	21:37:40.73	44°39.49'	110°40.93'	4.4	0.3	8	142	6	0.07
251113	00:08:54.64	44°44.87'	110°52.19'	10.8	0.7	13	101	5	0.16

Table 2. Earthquakes in the Yellowstone Region: October 1–December 31, 2025

DATE	ORIGIN TIME	LATITUDE	LONGITUDE	DEPTH	MAG	NO	GAP	DMN	RMS
251113	00:11:08.20	44°44.50'	110°52.71'	10.6	1.2W	27	101	6	0.15
251113	00:12:18.28	44°44.50'	110°52.83'	9.7	0.7	11	145	6	0.20
251113	00:14:34.77	44°44.37'	110°52.45'	9.8	1.4W	30	90	6	0.17
251113	00:24:10.51	44°44.24'	110°52.77'	9.4	1.5W	28	98	6	0.17
251113	02:35:09.33	44°44.64'	110°52.32'	9.9	0.6	13	99	5	0.15
251113	06:04:36.86	44°36.22'	110°42.44'	7.9	1.7W	32	51	5	0.15
251113	06:07:49.86	44°36.11'	110°41.82'	9.0	0.6	13	78	4	0.13
251113	06:11:37.16	44°35.91'	110°41.73'	9.2	0.6	9	136	4	0.08
251113	11:49:15.28	44°44.54'	110°52.30'	9.7	0.6	11	97	5	0.11
251113	12:49:44.68	44°44.61'	110°52.18'	7.9	0.0	8	96	5	0.06
251113	13:43:30.54	44°48.37'	110°50.16'	5.0	0.4	9	240	2	0.08
251114	16:55:35.90	44°45.34'	110°46.71'	5.3	1.2	10	159	7	0.13
251114	20:32:02.01	44°39.42'	110°40.59'	4.9	0.5	9	98	6	0.12
251115	07:00:07.17	44°40.47'	110°46.42'	2.2	0.4	11	83	8	0.18
251115	09:10:34.20	44°39.69'	110°40.46'	5.0	1.6	16	94	6	0.12
251115	21:25:57.80	44°36.16'	110°40.92'	5.4	1.5W	17	61	3	0.18
251115	21:28:49.18	44°37.46'	110°41.26'	2.2	1.0	11	109	4	0.14
251115	21:31:25.70	44°36.12'	110°40.90'	2.9	0.7	14	77	3	0.23
251115	21:50:18.90	44°36.79'	110°41.23'	5.0	0.6	15	59	4	0.16
251115	22:04:14.69	44°36.75'	110°40.96'	1.5	1.2	9	170	3	0.21
251116	01:04:28.91	44°41.05'	110°39.84'	2.2	0.2	11	218	9	0.12
251116	02:09:02.11	44°39.93'	110°40.63'	5.9	1.3W	22	86	5	0.14
251116	06:15:00.08	44°15.29'	110°37.64'	10.7	0.7	11	115	8	0.11
251116	11:17:53.49	44°47.78'	110°50.70'	4.5	0.3	18	108	1	0.15
251116	16:30:36.37	44°40.03'	110°40.57'	5.5	0.5	14	90	5	0.13
251116	19:47:41.02	44°23.06'	111°00.68'	3.6*	0.9W	17	147	16	0.17
251117	03:15:05.41	44°15.92'	110°23.68'	9.4	0.9	17	106	11	0.14
251117	03:55:12.32	44°40.61'	110°40.97'	6.0	0.2	17	86	4	0.14
251117	04:41:35.42	44°15.56'	110°23.31'	11.5	0.3	14	178	11	0.12
251117	12:02:24.08	44°41.23'	110°41.13'	6.7	0.8W	18	162	3	0.13
251118	12:12:22.36	44°47.56'	110°50.46'	5.0	1.0W	25	106	1	0.16
251118	14:31:00.38	44°40.59'	110°40.90'	6.1	0.3	16	87	4	0.16
251118	16:50:07.61	44°47.54'	110°50.08'	4.1	0.5	16	134	1	0.15
251118	20:41:32.87	44°47.69'	110°50.77'	4.8	1.4W	33	107	1	0.18
251119	02:43:56.48	44°39.47'	110°40.75'	5.1	0.1	14	90	6	0.17
251119	06:07:41.69	44°23.77'	110°41.58'	3.1	1.3W	19	88	9	0.12
251119	06:48:49.18	44°45.83'	110°25.38'	2.2	0.2	10	202	6	0.18
251119	10:44:44.76	44°39.89'	110°40.77'	7.5	1.6W	27	48	5	0.16
251119	11:00:06.79	44°39.39'	110°40.50'	5.2	0.3	17	90	6	0.14
251119	11:03:13.88	44°40.09'	110°40.67'	7.7	1.5W	26	49	5	0.14
251119	11:59:18.80	44°39.77'	110°40.22'	7.7	2.1W	36	49	6	0.17
251119	16:04:02.60	44°39.73'	110°40.63'	5.5	1.3W	27	48	6	0.13
251119	16:12:30.60	44°40.58'	110°41.01'	5.9	0.3	16	84	4	0.16
251119	18:00:13.16	44°40.11'	110°40.66'	5.5	-0.3	17	90	5	0.14
251119	18:13:09.26	44°39.96'	110°40.62'	5.6	0.6	16	92	5	0.13

Table 2. Earthquakes in the Yellowstone Region: October 1–December 31, 2025

DATE	ORIGIN TIME	LATITUDE	LONGITUDE	DEPTH	MAG	NO	GAP	DMN	RMS
251119	18:45:07.45	44°39.55'	110°40.69'	4.9	0.0	20	89	6	0.16
251119	20:35:47.63	44°40.26'	110°40.81'	6.0	1.3W	24	49	5	0.17
251119	20:35:55.94	44°41.62'	110°40.90'	7.4	0.8	10	157	2	0.06
251119	23:46:32.09	44°48.43'	110°50.07'	5.4	0.7	18	115	2	0.15
251120	00:07:30.77	44°40.05'	110°40.62'	7.1	1.3W	24	49	5	0.14
251120	00:07:38.46	44°40.99'	110°41.09'	7.2	1.5	14	121	3	0.09
251120	02:40:15.53	44°39.64'	110°40.71'	5.2	0.5	15	89	6	0.11
251120	04:16:59.59	44°49.69'	110°49.69'	6.4	0.6	9	254	5	0.13
251120	05:01:48.08	44°48.14'	110°49.86'	4.6	0.7	21	108	2	0.14
251120	06:53:02.65	44°15.56'	110°13.41'	7.2*	1.5W	20	101	16	0.14
251120	08:23:04.46	44°39.57'	110°40.42'	6.7	1.2W	23	49	6	0.13
251120	08:54:35.10	44°48.42'	110°50.18'	5.2	0.5	9	240	2	0.10
251120	10:40:00.53	44°47.70'	110°50.68'	4.8	0.5	21	107	1	0.12
251120	12:24:51.93	44°39.80'	110°40.47'	5.4	1.3W	21	93	6	0.14
251120	12:24:57.50	44°40.20'	110°40.76'	5.7	1.6W	11	178	5	0.10
251120	12:31:01.22	44°39.83'	110°40.50'	7.7	1.8W	33	48	5	0.16
251120	13:40:41.52	44°47.71'	110°50.25'	5.0	0.4	9	136	1	0.10
251120	14:12:41.88	44°39.58'	110°40.75'	4.0	0.4	10	98	6	0.07
251120	15:17:15.73	44°47.83'	110°51.04'	4.8	0.7	16	110	1	0.11
251120	15:38:30.07	44°47.67'	110°50.63'	4.9	0.8	19	107	1	0.12
251120	16:27:59.18	44°39.71'	110°40.68'	5.3	0.7	15	87	6	0.14
251120	17:55:26.25	44°14.72'	110°47.20'	3.5	1.0	11	74	3	0.17
251120	20:37:04.56	44°40.20'	110°40.87'	3.5	0.1	13	90	5	0.18
251121	00:05:47.58	44°47.88'	110°50.71'	5.0	0.5	23	109	1	0.14
251121	05:22:46.30	44°39.69'	110°40.51'	5.0	1.3W	22	68	6	0.20
251121	05:35:07.53	44°39.81'	110°40.68'	5.5	0.2	24	49	5	0.15
251121	06:09:06.53	44°40.26'	110°40.99'	7.5	1.4W	31	122	5	0.18
251121	06:10:21.65	44°39.95'	110°40.74'	5.3	0.2	18	92	5	0.14
251121	06:44:05.83	44°40.31'	110°40.65'	7.2	1.2W	29	89	5	0.15
251121	06:44:19.03	44°39.98'	110°40.77'	6.7	1.4W	31	49	5	0.16
251121	08:47:10.98	44°40.67'	110°40.10'	7.8	-0.1	12	94	4	0.13
251121	11:40:13.51	44°40.25'	110°40.84'	6.0	1.0W	23	83	5	0.18
251121	23:31:15.06	44°47.73'	110°50.44'	4.8	0.9W	27	108	1	0.17
251122	02:59:00.83	44°40.43'	110°41.22'	5.7	0.4	17	90	4	0.13
251122	03:10:03.38	44°47.78'	110°51.08'	4.9	0.4	16	109	1	0.13
251122	09:16:04.32	44°47.81'	110°50.79'	4.5	0.3	20	109	1	0.15
251122	11:41:28.68	44°16.55'	110°37.51'	9.6	0.7	11	101	8	0.19
251122	11:42:51.87	44°16.10'	110°37.46'	9.6	1.1W	20	66	8	0.21
251122	11:51:41.91	44°16.28'	110°37.69'	8.4	0.9	13	101	8	0.18
251122	11:54:50.05	44°16.90'	110°38.51'	7.9	--	10	108	9	0.18
251122	12:15:21.68	44°16.82'	110°38.12'	6.4	0.7	11	93	9	0.10
251122	12:37:19.84	44°16.24'	110°37.93'	8.0	1.3W	19	66	8	0.19
251122	20:06:26.08	44°39.83'	110°40.61'	4.9	1.2W	21	93	5	0.10
251122	20:07:57.13	44°40.43'	110°40.92'	6.9	1.1W	22	82	4	0.15
251123	00:18:15.87	44°39.50'	110°40.52'	4.8	0.5	14	97	6	0.06

Table 2. Earthquakes in the Yellowstone Region: October 1–December 31, 2025

DATE	ORIGIN TIME	LATITUDE	LONGITUDE	DEPTH	MAG	NO	GAP	DMN	RMS
251123	00:36:56.87	44°40.45'	110°40.65'	6.4	-0.1	10	89	4	0.09
251123	15:23:14.88	44°40.18'	110°40.76'	7.1	1.6W	29	47	5	0.15
251123	17:50:16.05	44°39.73'	110°39.84'	6.3	0.1	9	100	6	0.12
251123	18:44:49.30	44°40.35'	110°40.57'	6.9	0.6	17	87	4	0.12
251123	18:49:49.84	44°39.53'	110°40.39'	5.9	1.3W	26	48	6	0.13
251123	19:59:14.75	44°39.55'	110°40.40'	5.5	0.7	18	51	6	0.10
251123	22:14:54.60	44°39.55'	110°40.63'	5.0	0.0	10	97	6	0.07
251123	23:26:58.70	44°48.34'	110°49.42'	3.5	0.5	10	240	3	0.12
251124	00:02:44.50	44°39.71'	110°40.39'	4.9	0.5	10	93	6	0.09
251124	00:19:51.98	44°47.94'	110°49.67'	4.3	0.6	20	107	2	0.14
251124	00:40:56.22	44°48.24'	110°50.25'	5.1	0.3	9	238	2	0.09
251124	08:01:11.78	44°47.54'	110°50.26'	4.9	0.4	16	118	1	0.11
251124	08:37:00.04	44°39.38'	110°40.08'	7.7	0.5	13	97	6	0.18
251124	09:22:24.92	44°47.92'	110°51.04'	5.0	0.3	21	110	1	0.13
251124	09:35:24.36	44°38.62'	110°22.36'	5.8	0.4	13	88	9	0.07
251124	11:13:08.12	44°39.63'	110°40.70'	4.6	0.3	11	97	6	0.08
251124	15:14:02.55	44°31.45'	110°58.82'	14.6	0.6	14	110	13	0.10
251124	16:28:21.10	44°49.75'	110°52.47'	8.1	0.6	13	213	5	0.07
251124	16:37:03.81	44°47.57'	110°50.27'	4.4	0.7	13	118	1	0.09
251125	01:37:30.81	44°40.67'	110°41.50'	5.5	0.3	9	141	4	0.10
251125	05:17:01.30	44°44.17'	110°51.98'	7.2	0.3	10	88	6	0.06
251125	09:05:14.74	44°48.47'	110°50.07'	5.8	0.4	8	240	3	0.11
251125	11:49:50.58	44°39.77'	110°40.75'	5.1	0.3	11	96	6	0.12
251125	11:49:58.45	44°39.96'	110°40.61'	4.8	0.3	10	92	6	0.12
251125	17:47:50.62	44°39.16'	110°40.01'	5.0	0.4	13	99	6	0.06
251125	18:04:16.47	44°40.30'	110°40.79'	7.7	1.7W	27	46	5	0.15
251125	18:07:49.83	44°39.80'	110°40.59'	5.4	0.3	9	94	6	0.11
251125	18:08:04.47	44°39.82'	110°40.13'	5.3	0.5	7	96	6	0.09
251125	20:44:57.81	44°40.50'	110°39.95'	5.8	0.6	10	95	4	0.09
251125	21:15:43.85	44°47.71'	110°50.79'	4.7	0.9W	17	108	1	0.12
251125	21:25:24.07	44°47.95'	110°50.56'	4.0	0.4	9	233	1	0.12
251126	23:20:07.31	44°41.73'	110°41.09'	6.5	0.1	14	172	2	0.11
251126	23:20:14.79	44°42.24'	110°41.50'	5.8	0.1	11	174	1	0.25
251127	00:13:29.80	44°47.62'	110°50.62'	4.8	1.4W	31	107	1	0.18
251127	01:13:09.12	44°47.71'	110°50.60'	4.8	1.0W	19	107	1	0.15
251127	01:36:45.58	44°46.25'	110°53.38'	9.1	1.2W	27	103	4	0.16
251127	01:40:55.08	44°46.59'	110°53.61'	8.3	1.5W	25	112	4	0.13
251127	01:42:17.57	44°46.25'	110°53.31'	7.4	0.8W	16	103	4	0.13
251127	02:09:24.92	44°46.34'	110°53.45'	8.5	1.1W	23	104	4	0.16
251127	02:11:01.52	44°46.32'	110°53.42'	8.3	0.8W	20	104	4	0.14
251127	02:53:30.27	44°46.33'	110°53.26'	9.1	1.0W	22	103	3	0.17
251127	05:24:10.53	44°40.17'	110°40.68'	5.6	0.5	12	90	5	0.13
251127	08:05:44.56	44°42.24'	110°28.02'	5.0	0.5	11	174	4	0.16
251127	09:45:19.64	44°46.28'	110°53.24'	10.2	2.0W	33	103	3	0.18
251127	11:10:13.20	44°46.34'	110°53.43'	8.1	1.0W	20	104	4	0.16

Table 2. Earthquakes in the Yellowstone Region: October 1–December 31, 2025

DATE	ORIGIN TIME	LATITUDE	LONGITUDE	DEPTH	MAG	NO	GAP	DMN	RMS
251127	11:10:36.23	44°46.18'	110°53.32'	9.3	1.6W	33	102	4	0.18
251127	22:29:48.83	44°46.32'	110°53.35'	9.0	0.8W	23	104	4	0.15
251128	00:17:46.37	44°17.10'	110°26.88'	11.7	0.4	13	175	7	0.19
251128	06:50:23.55	44°47.55'	110°50.90'	4.8	-0.0	15	107	0	0.14
251128	15:26:18.17	44°48.10'	110°50.69'	4.9	0.2	20	110	2	0.18
251128	17:03:39.83	44°40.12'	110°40.49'	7.2	1.1W	27	49	5	0.18
251128	17:42:39.23	44°40.59'	110°41.24'	6.1	0.3	20	88	4	0.15
251128	17:43:25.82	44°40.65'	110°41.18'	6.3	-0.0	15	170	4	0.13
251128	18:06:57.11	44°40.71'	110°41.11'	6.1	-0.1	13	87	4	0.15
251128	18:38:40.68	44°47.81'	110°50.80'	4.6	0.1	17	109	1	0.17
251128	19:45:30.33	44°43.34'	110°40.74'	4.3	1.1W	26	60	1	0.15
251128	21:10:24.48	44°40.30'	110°40.91'	5.3	1.0W	18	107	5	0.17
251128	21:42:29.01	44°40.33'	110°40.84'	5.5	0.7	15	89	5	0.16
251128	22:34:02.07	44°41.07'	110°41.10'	6.6	0.4	19	164	3	0.12
251128	22:34:11.85	44°41.35'	110°41.10'	6.8	0.2	18	161	3	0.12
251129	07:52:13.35	44°39.71'	110°40.43'	4.3	0.0	10	104	6	0.11
251129	10:29:29.10	44°40.30'	110°41.11'	1.7	0.2	14	91	5	0.13
251129	11:07:51.34	44°40.15'	110°40.85'	6.7	1.3W	28	48	5	0.16
251129	15:34:04.52	44°40.20'	110°40.59'	5.6	0.1	12	89	5	0.21
251129	19:45:16.98	44°35.72'	110°58.79'	8.9	1.5W	23	77	8	0.14
251129	22:42:16.69	44°36.04'	111°02.18'	8.1	0.1	14	82	5	0.12
251130	13:19:14.09	44°40.28'	110°42.28'	2.8	0.0	9	222	5	0.10
251130	16:00:40.50	44°47.77'	110°50.92'	4.8	1.4W	29	108	1	0.15
251130	16:52:31.90	44°44.97'	111°00.62'	6.3	0.6	16	117	10	0.18
251130	19:41:00.83	44°47.90'	110°50.79'	5.0	1.2W	33	109	1	0.16
251201	06:34:27.40	44°48.13'	110°50.26'	4.9	0.3	8	236	2	0.07
251201	10:16:14.09	44°39.45'	110°56.87'	6.3	0.4	15	85	2	0.12
251201	18:48:35.29	44°40.15'	110°44.23'	8.0	1.1W	18	164	7	0.17
251201	19:17:45.34	44°39.50'	110°44.20'	8.1	1.6W	27	87	8	0.18
251201	19:18:14.37	44°39.43'	110°44.10'	8.4	1.7W	31	46	8	0.19
251201	21:53:20.42	44°39.33'	110°43.95'	5.9	0.1	14	131	8	0.19
251203	10:26:04.79	44°48.04'	110°48.94'	4.9	1.7W	29	106	3	0.14
251203	16:38:17.49	44°48.25'	110°50.95'	4.9	0.4	20	111	2	0.14
251203	18:45:43.95	44°46.41'	110°46.17'	4.0	0.2	18	137	7	0.14
251204	04:46:50.40	44°45.65'	111°07.43'	9.5	0.3	12	110	4	0.08
251204	09:42:05.98	44°44.58'	111°07.95'	13.2	1.2W	11	150	6	0.11
251204	09:42:08.99	44°42.35'	110°39.35'	4.5	0.9	10	208	2	0.05
251204	09:43:53.26	44°45.24'	111°07.55'	10.9	0.9W	19	61	5	0.12
251204	09:44:43.67	44°40.42'	110°40.55'	6.6	1.2W	15	150	4	0.10
251205	04:09:57.10	44°48.00'	110°50.05'	4.7	0.6	24	108	2	0.16
251205	17:54:22.65	44°44.52'	111°09.56'	11.1	1.0W	22	59	3	0.17
251205	17:55:12.92	44°44.42'	111°09.55'	10.5	0.3	18	60	3	0.17
251205	23:02:57.54	44°40.33'	110°40.99'	5.5	0.6	18	89	5	0.11
251206	10:54:22.77	44°48.23'	110°49.95'	4.6	1.3W	30	109	2	0.18
251207	05:02:01.27	44°48.19'	110°50.57'	5.2	1.6W	35	110	2	0.18

Table 2. Earthquakes in the Yellowstone Region: October 1–December 31, 2025

DATE	ORIGIN TIME	LATITUDE	LONGITUDE	DEPTH	MAG	NO	GAP	DMN	RMS
251207	15:18:25.46	44°45.00'	111°12.44'	10.3	0.6	18	88	1	0.17
251208	02:46:35.37	44°47.65'	110°50.72'	5.3	1.3W	24	107	1	0.12
251208	22:39:29.63	44°47.87'	110°50.87'	4.8	0.9	22	109	1	0.18
251209	03:14:01.50	44°47.88'	110°50.86'	4.9	1.5W	26	109	1	0.15
251209	07:44:18.60	44°47.71'	110°50.76'	4.9	1.4W	22	107	1	0.12
251212	19:36:30.06	44°39.55'	110°40.40'	5.1	0.6	16	95	6	0.10
251212	19:37:22.12	44°39.55'	110°40.58'	4.4	0.3	9	96	6	0.09
251213	06:51:38.31	44°48.04'	110°49.62'	3.6	0.9W	12	235	2	0.14
251213	23:16:53.77	44°43.78'	110°13.83'	17.1	0.9	6	201	6	0.05
251215	02:13:40.16	44°45.26'	111°11.10'	11.0	0.9W	21	66	1	0.15
251215	04:47:34.16	44°40.68'	110°42.59'	6.1	0.1	11	122	5	0.08
251216	03:05:07.32	44°39.90'	110°40.11'	6.4	0.3	15	97	6	0.19
251216	04:05:39.08	44°38.95'	111°00.83'	9.4	0.9	21	55	4	0.19
251216	19:21:19.27	44°40.65'	110°41.00'	6.5	1.0	13	171	4	0.16
251218	06:26:29.73	44°07.67'	110°18.20'	11.9	2.1W	26	106	18	0.15
251218	12:39:45.89	44°38.08'	110°44.37'	2.2	-0.1	12	146	8	0.15
251218	12:40:01.36	44°37.81'	110°44.42'	4.8	0.4	15	112	8	0.18
251218	12:44:26.81	44°37.39'	110°44.41'	6.0	0.8W	24	65	8	0.18
251218	12:56:21.00	44°37.86'	110°44.38'	2.3	0.7	8	112	8	0.15
251218	13:02:14.08	44°37.02'	110°44.24'	7.8	1.2W	26	64	8	0.19
251218	13:21:27.17	44°37.07'	110°44.16'	7.4	0.9W	26	64	8	0.16
251218	13:28:53.48	44°36.24'	110°44.74'	5.2	1.4W	20	61	8	0.15
251219	06:48:30.63	44°39.30'	110°40.48'	4.7	0.8	13	92	6	0.17
251219	06:48:48.64	44°39.68'	110°39.62'	5.3	0.6	12	102	6	0.14
251219	07:50:35.22	44°47.99'	110°49.97'	4.8	0.8	23	108	2	0.16
251219	08:46:21.79	44°41.63'	110°40.90'	6.9	0.4	9	102	2	0.13
251219	09:31:26.97	44°45.73'	110°47.09'	2.4	0.4	10	181	6	0.08
251219	12:48:50.91	44°47.64'	110°50.70'	4.9	1.6W	30	107	1	0.16
251219	15:19:31.88	44°45.93'	110°47.00'	5.1	2.0W	32	76	6	0.17
251219	15:32:16.31	44°45.78'	110°47.08'	2.3	0.6	8	183	6	0.11
251219	16:24:55.19	44°46.22'	110°46.96'	5.0	1.8W	22	81	6	0.16
251219	17:46:19.50	44°46.84'	110°50.20'	3.0	0.8	8	172	1	0.10
251219	22:20:48.21	44°47.46'	110°50.46'	4.9	1.8W	24	106	1	0.17
251221	15:39:47.51	44°07.39'	110°13.66'	11.1	2.3W	19	110	12	0.10
251221	16:41:58.37	44°07.30'	110°13.59'	11.2	1.4	16	128	12	0.09
251221	19:58:10.30	44°08.21'	110°13.85'	5.2*	1.2	15	140	12	0.18
251221	22:03:30.23	44°47.76'	110°50.89'	5.0	0.9	16	108	1	0.13
251222	01:54:22.65	44°47.98'	110°50.23'	4.9	1.2W	25	109	2	0.15
251222	22:16:52.85	44°41.24'	110°01.39'	13.3	0.9	9	168	9	0.09
251223	21:47:40.75	44°28.43'	110°43.85'	4.4	0.5	10	86	9	0.14
251223	22:19:32.39	44°06.11'	110°36.18'	5.2	1.6W	17	143	8	0.11
251224	08:29:43.97	44°40.22'	110°40.40'	7.4	1.1W	25	50	5	0.14
251225	18:28:37.83	44°44.43'	110°48.57'	4.9	1.5W	22	78	6	0.10
251226	19:18:04.69	44°39.82'	110°40.89'	4.8	0.3	13	96	5	0.11
251226	19:59:43.04	44°40.28'	110°39.85'	5.4	0.6	9	98	5	0.11

Table 2. Earthquakes in the Yellowstone Region: October 1–December 31, 2025

DATE	ORIGIN TIME	LATITUDE	LONGITUDE	DEPTH	MAG	NO	GAP	DMN	RMS
251228	22:12:11.56	44°35.44'	110°22.58'	4.3	1.0	12	104	3	0.09
251229	08:30:47.10	44°48.18'	110°49.89'	4.6	1.1W	22	109	2	0.15
251229	15:40:03.58	44°06.16'	110°36.61'	7.9	0.8	15	141	8	0.14
251230	00:40:26.04	44°40.89'	110°10.21'	9.7	0.3	8	134	4	0.06
251230	04:51:42.13	44°45.01'	110°30.10'	5.7	0.4	9	192	4	0.07
251230	21:38:35.43	44°48.24'	110°50.55'	7.4	1.0W	20	110	2	0.14
251231	20:14:06.62	44°40.28'	110°40.15'	7.6	1.8W	32	95	5	0.22
251231	20:15:12.72	44°39.93'	110°40.79'	5.0	0.8	16	88	5	0.17
251231	20:32:21.89	44°40.02'	110°40.67'	7.3	2.2W	37	48	5	0.18
251231	20:44:09.54	44°39.85'	110°40.70'	7.4	2.7W	37	43	5	0.18
251231	21:04:08.75	44°40.26'	110°40.53'	6.7	--	22	90	5	0.18
251231	21:04:12.78	44°41.46'	110°41.47'	7.1	1.7W	19	158	3	0.16
251231	21:07:26.04	44°39.53'	110°40.44'	4.6	1.1	13	89	6	0.10

number of earthquakes = 508

* indicates poor depth control

W indicates Wood-Anderson data used for magnitude calculation

Table 3
UNIVERSITY OF UTAH YELLOWSTONE SEISMIC NETWORK
Operating Seismograph Stations
December 31, 2025

SEED Station	Location	SEED Channel	No. of Channels	Network Code	Latitude	Longitude	Elevation (meters)	Sensor	Digitizer	Telemetry	Sponsor
B206*	Canyon206bwy2008, Yellowstone, WY	EH[Z12]	3	PB	44° 46.66'	110° 30.70'	2400	IESE-S2	Q330	Digital	EarthScope
B207*	Madisn207bwy2007, Yellowstone, WY	EH[Z12]	3	PB	44° 37.14'	110° 50.91'	2182	IESE-S2	Q330	Digital	EarthScope
B208*	Lakejn208bwy2008, Yellowstone, WY	EH[Z12]	3	PB	44° 33.61'	110° 24.09'	2406	IESE-S2	Q330	Digital	EarthScope
B944*	Grantt944bwy2008, Yellowstone, WY	EH[Z12]	3	PB	44° 23.38'	110° 32.63'	2365	IESE-S2	Q330	Digital	EarthScope
B945*	Panthr944swy2008, Yellowstone, WY	EH[Z12]	3	PB	44° 53.64'	110° 44.65'	2249	IESE-S2	Q330	Digital	EarthScope
B950*	Norris950bwy2013, Yellowstone, WY	EH[Z12]	3	PB	44° 42.77'	110° 40.71'	2328	IESE-S2	Q330	Digital	EarthScope
FLWY*	Flagg Ranch, WY	BH[ZEN]	3	IW	44° 04.96'	110° 41.96'	2078	3ESP	RT-130	Digital	ANSS
IMW*	Indian Meadows, WY	BH[ZEN]	3	IW	43° 53.58'	110° 56.58'	2670	3ESP	RT-130	Digital	ANSS
LKWY*	Lake, WY	BH[ZEN]	3	US	44° 33.91'	110° 24.00'	2424	STS-2	Q330	Digital	USGS
LOHW*	National Elk Refuge, WY	BH[ZEN]	3	IW	43° 36.76'	110° 36.30'	2245	3ESP	RT-130	Digital	ANSS
MCID	Moose Creek, ID	EHZ	1	WY	44° 11.45'	111° 11.03'	2137	L4C	PSN	Analog	USGS
MOOW*	Moose Ponds, WY	BH[ZEN]	3	IW	43° 44.92'	110° 44.69'	2128	3ESP	RT-130	Digital	ANSS
QLMT*	Earthquake Lake, MT	EHZ	1	MB	44° 49.84'	111° 25.80'	2064	L4C	-	Analog	MBMT
REDW*	Red-Top Meadows, WY	BH[ZEN]	3	IW	43° 21.74'	110° 51.18'	2322	3ESP	RT-130	Digital	ANSS
SNOW*	Snow King Mountain, WY	BH[ZEN]	3	IW	43° 27.75'	110° 45.31'	2390	3ESP	RT-130	Digital	ANSS
TPAW*	Teton Pass, WY	BH[ZEN]	3	IW	43° 29.41'	110° 57.04'	2512	3ESP	RT-130	Digital	ANSS
TPMT*	Teepe Creek, MT	EHZ	1	MB	44° 43.79'	111° 39.94'	2518	L4C	-	Analog	MBMT
YBB	Biscuit Basin (YNP), WY	HH[ZEN]	3	WY	44° 29.15'	110° 51.31'	2221	Trillium 120	Centaur	Digital	USGS
		HDF[1,2,3]	3					Chaparral			
YDC	Denny Creek, MT	HH[ZEN]	3	WY	44° 42.51'	111° 14.60'	2025	Trillium 120	Centaur	Digital	USGS
YDD	Grant Junction, Yellowstone, WY	HH[ZEN]	3	WY	44° 24.00'	110° 34.80'	2400	STS-2	Q330	Digital	USGS
		EN[ZEN]	3					Episensor			
YEE	East Entrance (YNP), WY	HH[ZEN]	3	WY	44° 29.12'	109° 53.81'	2270	Compact PH	Centaur	Digital	USGS
YFT	Old Faithful (YNP), WY	HH[ZEN]	3	WY	44° 27.05'	110° 50.24'	2292	Compact	Centaur	Digital	USGS
		EN[ZEN]	3					Titan			
YGC	Grayling Creek, MT	HH[ZEN]	3	WY	44° 47.77'	111° 06.45'	2075	Trillium 120	Centaur	Digital	USGS
YHB	Horse Butte, MT	HH[ZEN]	3	WY	44° 45.07'	111° 11.71'	2157	Compact	Centaur	Digital	USGS
		EN[ZEN]	3					Titan			
YHH	Holmes Hill (YNP), WY	EHZ	1	WY	44° 47.30'	110° 51.03'	2717	S13	Centaur	Analog	USGS
		HH[ZEN]	3					Trillium 120			
		EN[ZEN]	3					Titan			
YHL	Hebgen Lake, MT	HH[ZEN]	3	WY	44° 51.05'	111° 10.98'	2691	Trillium 120	Centaur	Digital	USGS

SEED Station	Location	SEED Channel	No. of Channels	Network Code	Latitude	Longitude	Elevation (meters)	Sensor	Digitizer	Telemetry	Sponsor
		EN[ZEN]	3					Titan			
YHR	Hawk's Rest, WY	HH[ZEN]	3	WY	44° 06.36'	110° 04.90'	2976	Trillium 120	Q330	Digital	USGS
YJC	Joseph's Coat (YNP), WY	HH[ZEN]	3	WY	44° 45.33'	110° 20.95'	2684	Trillium 120	Centaur	Digital	USGS
YLA	Lake Butte (YNP), WY	HH[ZEN]	3	WY	44° 30.76'	110° 16.12'	2580	Trillium 120	Centaur	Digital	USGS
YLT	Little Thumb Creek (YNP), WY	HH[ZEN]	3	WY	44° 26.25'	110° 35.28'	2439	Trillium 120	Centaur	Digital	USGS
YMC	Maple Creek (YNP), WY	EH[ZEN]	3	WY	44° 45.53'	111° 00.41'	2073	S13	PSN	Analog	USGS
YML	Mary Lake (YNP), WY	EH[ZEN]	3	WY	44° 36.20'	110° 38.63'	2653	S13	PSN	Analog	USGS
YMP	Mirror Plateau (YNP), WY	EHZ	1	WY	44° 44.38'	110° 09.40'	2774	S13	PSN	Analog	USGS
		HH[ZEN]	3					Trillium 120	Q330	Digital	
		EN[ZEN]	3					Titan			
YMR	Madison River (YNP), WY	HH[ZEN]	3	WY	44° 40.12'	110° 57.90'	2149	Trillium 120	Q330	Digital	USGS
		EN[ZEN]	3					Titan			
YMS	Mount Sheridan (YNP), WY	EHZ	1	WY	44° 15.84'	110° 31.67'	3106	L4C	PSN	Analog	USGS
YMV	Mammoth Vault (YNP), WY	HH[ZEN]	3	WY	44° 58.42'	110° 41.33'	1829	Trillium 120	Centaur	Digital	USGS
YNB	Norris Basin (YNP), WY	HH[ZEN]	3	WY	44° 43.64'	110° 42.67'	2307	Trillium 120	Centaur	Digital	USGS
		HDF[1,2,3]	3					InfraBSU			
YNE	Northeast Entrance (YNP), WY	HH[ZEN]	3	WY	45° 00.46'	110° 00.48'	2343	Compact	Centaur	Digital	USGS
YNM	Norris Museum (YNP), WY	HH[ZEN]	3	WY	44° 43.59'	110° 42.22'	2311	Trillium 240	Centaur	Digital	USGS
YNR	Norris Junction (YNP), WY	HH[ZEN]	3	WY	44° 42.93'	110° 40.75'	2336	Trillium 120	Centaur	Digital	USGS
		EN[ZEN]	3					Titan			
YPC	Pelican Cone (YNP), WY	HH[ZEN]	3	WY	44° 38.88'	110° 11.55'	2932	Trillium 120	Centaur	Digital	USGS
YPK	Parker Peak (YNP), WY	EH[ZEN]	3	WY	44° 43.91'	109° 55.32'	2897	L4C	PSN	Analog	USGS
YPM	Purple Mountain (YNP), WY	EHZ	1	WY	44° 39.43'	110° 52.12'	2582	L4C	PSN	Analog	USGS
YPP	Pitchstone Plateau (YNP), WY	HH[ZEN]	3	WY	44° 16.26'	110° 48.27'	2707	Trillium 120	Centaur	Digital	USGS
		EN[ZEN]	3					Titan			
YSC	Slough Creek (YNP), WY	HH[ZEN]	3	WY	44° 56.58'	110° 18.40'	1930	Trillium 120	Centaur	Digital	USGS
YTP	The Promontory (YNP), WY	EHZ	1	WY	44° 23.51'	110° 17.10'	2384	L4	PSN	Analog	USGS
		HH[ZEN]	3					Trillium 120	Centaur	Digital	
		EN[ZEN]	3					Titan			
YUF	Upper Falls (YNP), WY	HH[ZEN]	3	WY	44° 42.76'	110° 30.71'	2394	Trillium 120	Centaur	Digital	USGS
		EN[ZEN]	3					Titan			
YWB	West Boundary (YNP), WY	HH[ZEN]	3	WY	44° 36.35'	111° 06.05'	2310	Trillium 120	Centaur	Digital	USGS

* Station operated by another agency and recorded as part of the Yellowstone Seismic Network
Network Statistics: 176 data channels from 48 stations were being recorded at the end of this report period

EXPLANATION OF TABLE

UURSN Code: Station code formerly used in routine processing. Owing to software limitations, the station code may not be the same code used by the original operator. For multi-component stations, the vertical, east-west, and north-south high gain (low gain) components are identified by an appended Z(V), E(L), and N(M), respectively, in UUSS phase files.

Location: General description of station location. YNP = Yellowstone National Park.

SEED Station: The SEED (Standard for the Exchange of Earthquake Data) station code used by the original operator.

SEED Channel: The SEED format uses three letters to name seismic channels. See <<http://www.fdsn.org/seed_manual/SEEDManual_V2.4.pdf>> for information about the SEED channel naming convention. Relevant sections are reproduced below. In the SEED convention, each letter describes one aspect of the instrumentation and its digitization. The first letter specifies the general sampling rate and the response band of the instrument. Band codes used in this table include:

Band Code	Band Type	Sample Rate	Corner Period
E	Extremely short period	≥ 80 Hertz	< 10 seconds
H	High broadband	≥ 80 Hertz	≥ 10 seconds
B	Broadband	≥ 10 to < 80 Hertz	≥ 10 seconds
S	Short period	≥ 10 to < 80 Hertz	< 10 seconds

The second letter specifies the family to which the sensor belongs. Sensor families used in this table are:

Instrument Code	Description
H	High gain seismometer
L	Low gain seismometer
N	Accelerometer

The third letter specifies the physical configuration of the members of a multiple axis instrument package. Channel orientations used in this table are:

Z E N Traditional (Vertical, East-West, North-South)

Number of Channels: Total number of waveform channels recorded.

Network Code: The FDSN (Federation of Digital Seismographic Networks) registered network code. See <<<https://www.fdsn.org/networks/>>> for information about registered seismograph network codes. Network codes referenced in this table:

Network Code	Network name; Network operator or responsible organization
IE	Idaho National Laboratory Seismic Network
IU	IRIS/USGS Network; USGS Albuquerque Seismological Laboratory
IW	Intermountain West Network, U.S. Geological Survey
MB	Montana Regional Seismic Network; Montana Bureau of Mines and Geology

PB	Plate Boundary Observatory (EarthScope Consortium)
UU	University of Utah Regional Network; University of Utah
US	US National Network; USGS National Earthquake Information Center
WY	Yellowstone Wyoming Seismic Network; University of Utah

Latitude, Longitude: Sensor location in degrees and decimal minutes; North latitude, West longitude.

Elevation: Sensor altitude in meters above sea level.

Sensor	Description
L4, L4C	Mark Products L4 or L4C short-period seismometer
S13, 18300	Geotech S13 or 18300 short-period seismometer
Ranger	Kinometrics Ranger short-period seismometer
40T	Guralp CMG-40T broadband seismometer
3T	Guralp CMG-3T broadband seismometer
3ESP	Guralp CMG-3ESP broadband seismometer
STS-2	Streckheisen STS-2 broadband seismometer
FBA23	Kinometrics FBA-23 accelerometer
EpiSensor	Kinometrics EpiSensor accelerometer
Applied Mems	Applied Mems accelerometer
PA-23	Geotech PA-23 accelerometer
Compact	Nanometrics Compact broadband seismometer
Compact PH	Nanometrics Compact Posthole broadband seismometer
Trillium 120	Nanometrics Trillium 120 broadband seismometer
Trillium 240	Nanometrics Trillium 240 broadband seismometer
Titan	Nanometrics Titan accelerometer
Observer	Refraction Technology (REF TEK) Model 151 Observer broadband seismometer
IESE-S2	Institute of Earth Science and Engineering S-2 model borehole seismometer

Digitizer	Description
K2	Kinometrics Altus Series K2 (19-bit resolution field digitizer)
Etna	Kinometrics Altus Series Etna (18-bit resolution field digitizer)
72A-07	Refraction Technology (REF TEK) model 72A-07 (24-bit field digitizer)
72A-08	Refraction Technology (REF TEK) model 72A-08 (24-bit field digitizer)
ANSS-130	Refraction Technology (REF TEK) model 130-ANSS/02 (24-bit resolution field digitizer)
RT-130	Refraction Technology (REF TEK) model RT-130 (24-bit resolution field digitizer)
Q330	Quanterra, Inc Q330 digitizer (24-bit resolution field digitizer)
SMART-24	Geotech SMART-24 digitizer (24-bit resolution field digitizer)
PSN	PSN-ADC-SERIAL version III (16-bit resolution field digitizer)
Basalt	Kinometrics Basalt (24-bit resolution field digitizer)
Taurus	Nanometrics Taurus (24-bit resolution field digitizer)
Centaur	Nanometrics Centaur (24-bit resolution field digitizer)

Telemetry	Description
Analog	Data transmission is analog along part of the transmission pathway
Digital	Data are converted to digital form at the station site
None	On-site recording system

Sponsor (or Operator for stations marked by * in preceding columns)

USGS	U.S. Geological Survey
Utah	State of Utah
ANSS	Advanced National Seismic System
INL	Idaho National Laboratory
MBMT	Montana Bureau of Mines and Geology
EarthScope	EarthScope Consortium
NSF	National Science Foundation

Network Changes During October 1–December 31, 2025

None